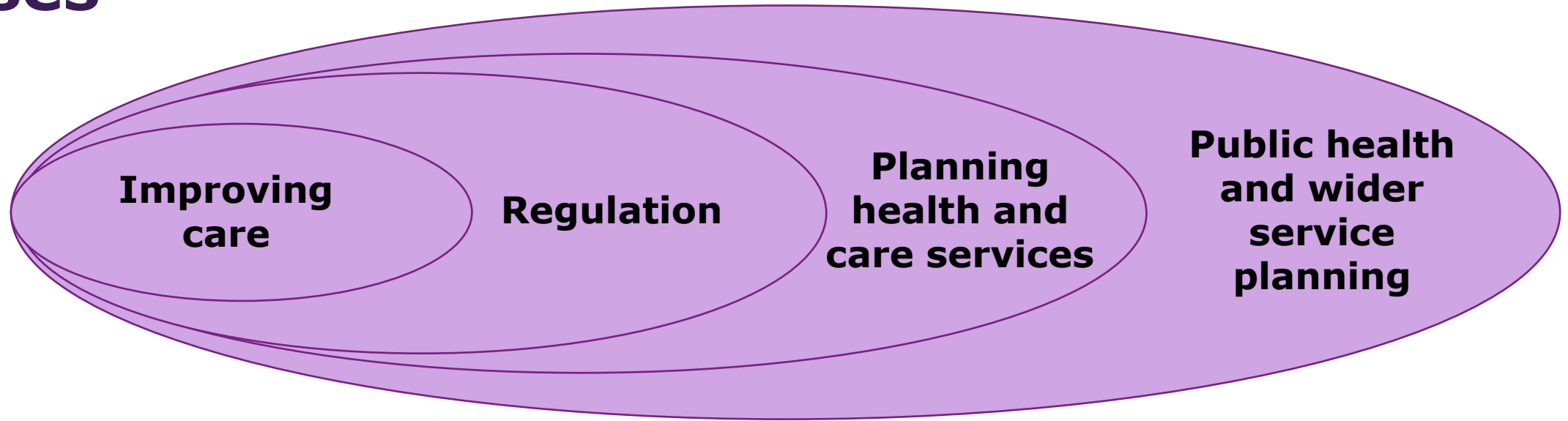


# Planning and improvement in the health and care system



Alex Baylis, Assistant Director, Policy, The King's Fund

# Planning and improvement: a range of uses



**Improving care**

**Regulation**

**Planning health and care services**

**Public health and wider service planning**

**~1.3m**

NHS employees

**~50,000**

Organisations providing care

**£130bn**

Spent on the NHS every year

**£22.2bn**

Public funding of social care

**£3.3bn**

Budgets for public health

# Improvement

# Quality improvement



**safety:** avoiding harm to patients



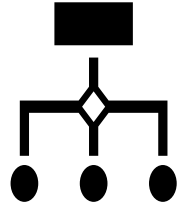
**experience of care:** this should be characterised by compassion, dignity and respect



**effectiveness of care:** including preventing people from dying prematurely, enhancing quality of life and helping people to recover following episodes of ill health

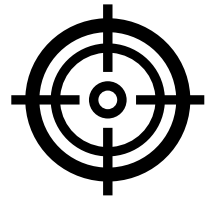
# Regulation

# What does a regulator do?



Monitor

Rate



Inspect



# Planning

# What is planning?

## The hierarchy of decision making

**Central government**

Determines overall NHS budget and objectives

**NHS England & national bodies**

Set priorities and allocates funding to commissioners

**Commissioners**

National and local, decide on which services to fund

**Providers**

Allocate resources between services or departments

**Clinicians**

With the service user, decide on whether/what care is needed

**Service users**

Take part in decisions about treatment and self care



# Public health

# What is public health?

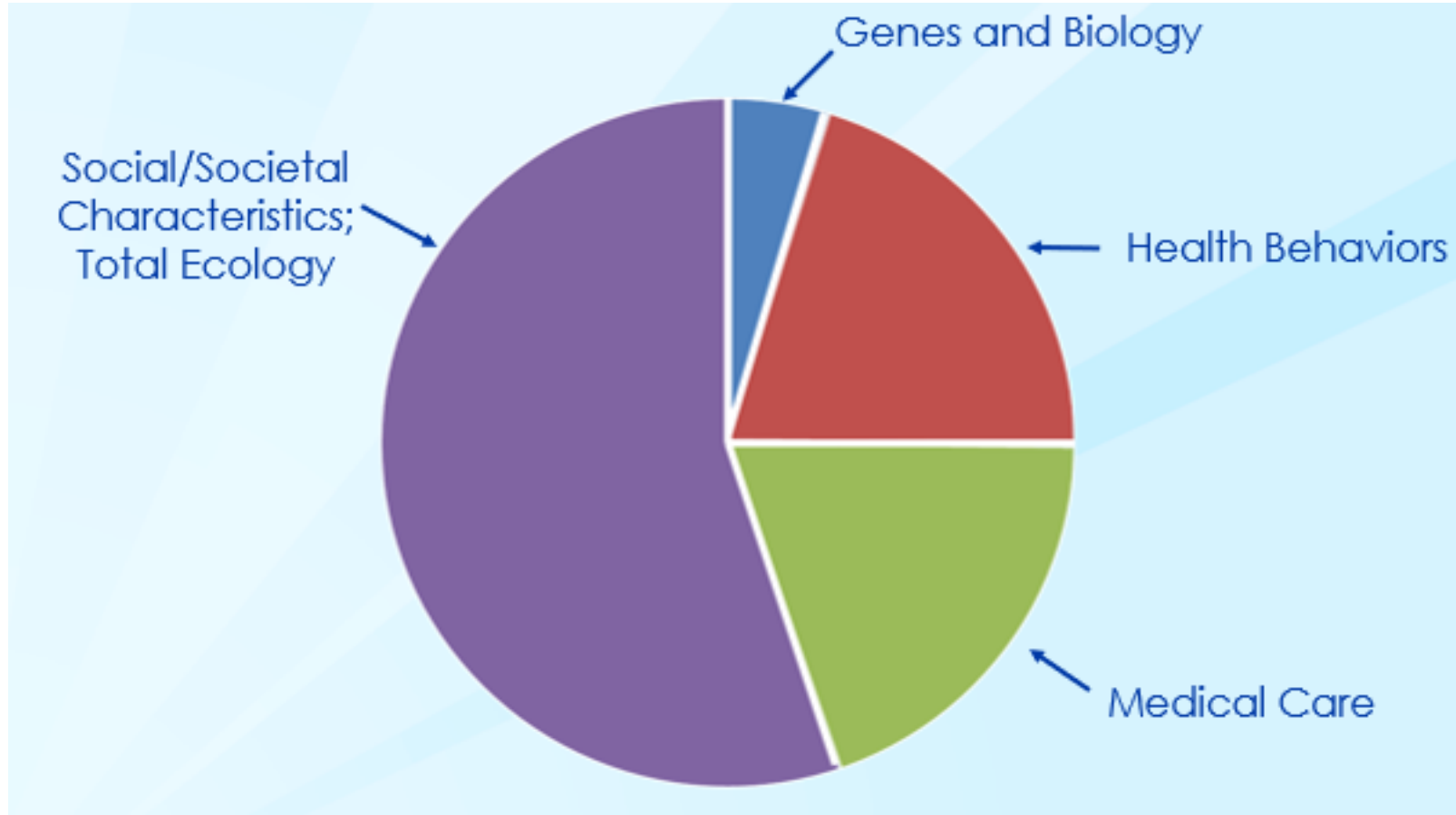
*"The science and art of preventing disease, prolonging life, and promoting health through the organized efforts and informed choices of society, organizations, public and private communities, and individuals"*

C-E Winslow, founder of Yale Dept of Public Health, 1920

*"Public health aims to provide maximum benefit for the largest number of people."*

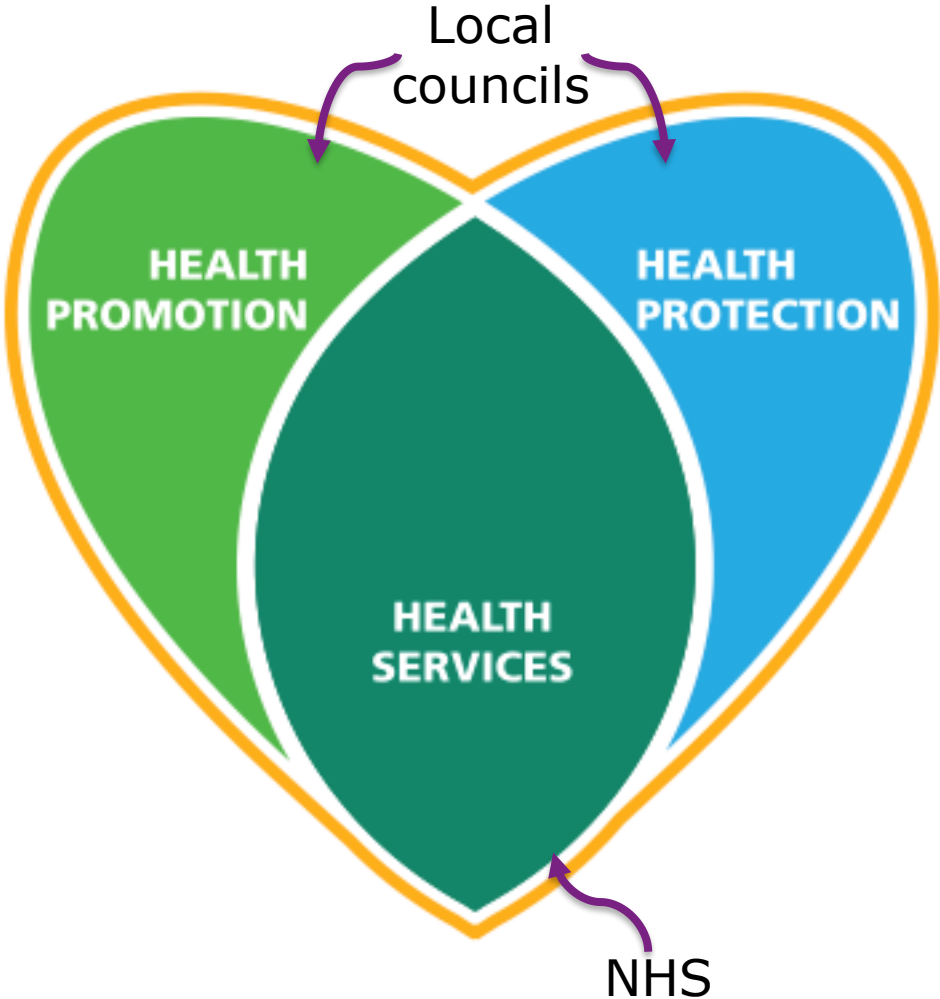
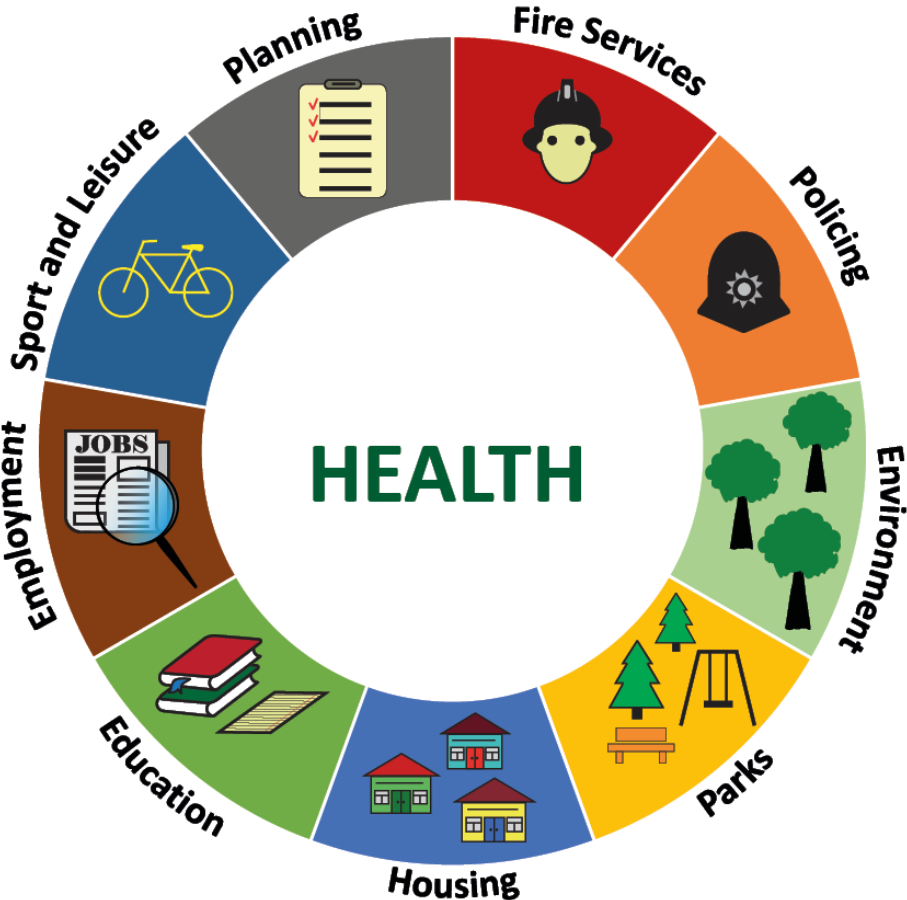
World Health Organization

# What determines the public's health?



Source: Centre for Disease Control and Prevention. <http://www.cdc.gov/socialdeterminants/FAQ.html>

# Public health sits in local councils, not the NHS



# Population health



# Planning and improvement: a range of uses

