

Why are we doing this?

Mark Kewley

OneLondon Programme Team

Why are we doing this?

We think things could be better

- There are lots of brilliant staff in the health and social care system who work hard to **serve the population of London.**
- But there is a feeling that **what we do falls well short of what could be done** for the >£9bn of your tax that is spent on care in London every year.
- Many people in the system think **we could do much more if we used health and care information and technology in a different way.**

Why are we doing this?

We could be more joined-up

- As a manager in the health and care system, staff ask me to think about the possibility of better care...

Wouldn't it be better if we really **empowered people to see and use their own information?**



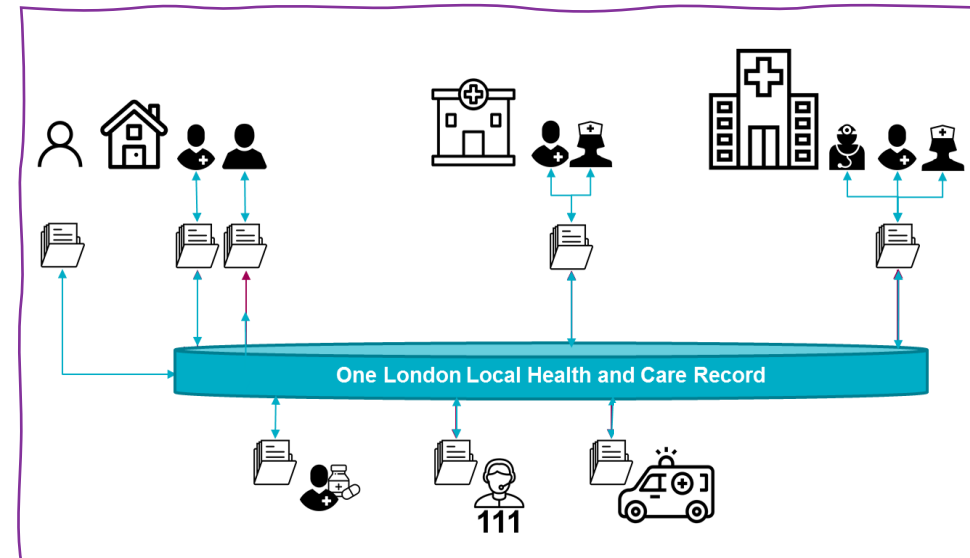
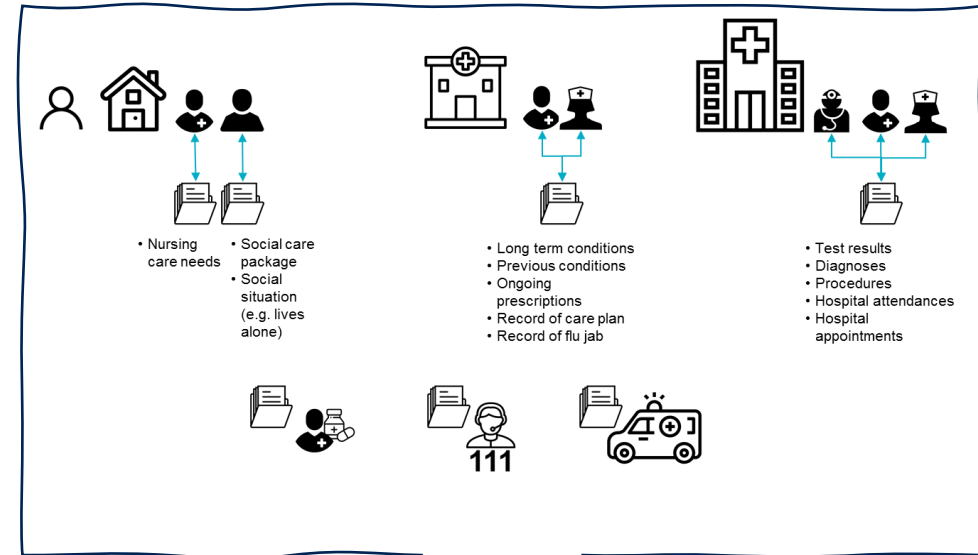
Wouldn't it be better if care teams could **see a person's full care record rather than fragments?**

Wouldn't it be better if we used data to **spot the people who are starting to get unwell** before they end up in the A&E or at the GP?

Why are we doing this?

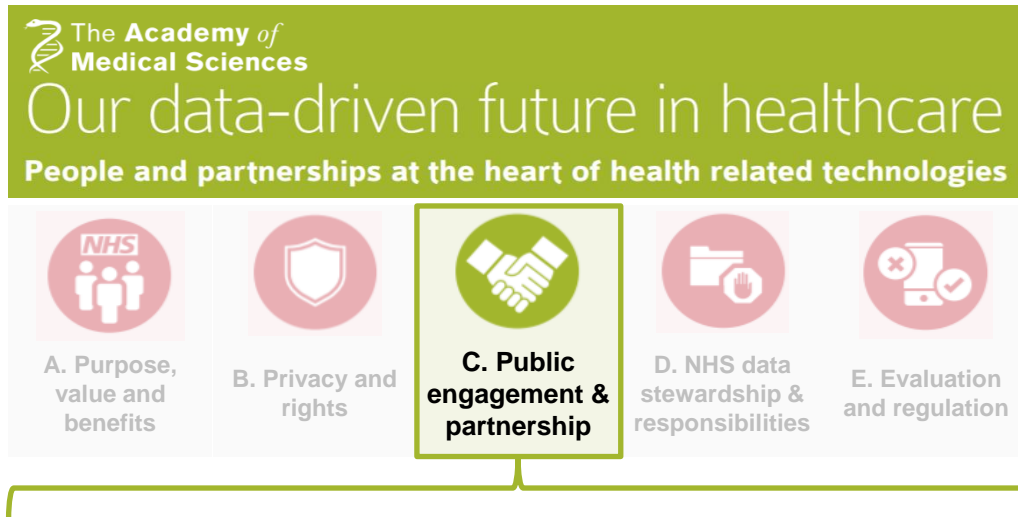
But does the public want it?

- **The technology exists** to join-up health and care information
- In London we have established the **OneLondon programme** to help join-up health and care information
- But just because we could, doesn't mean we should... and **how to do it is a point of legitimate debate**



Why are we doing this?

What is acceptable and why?



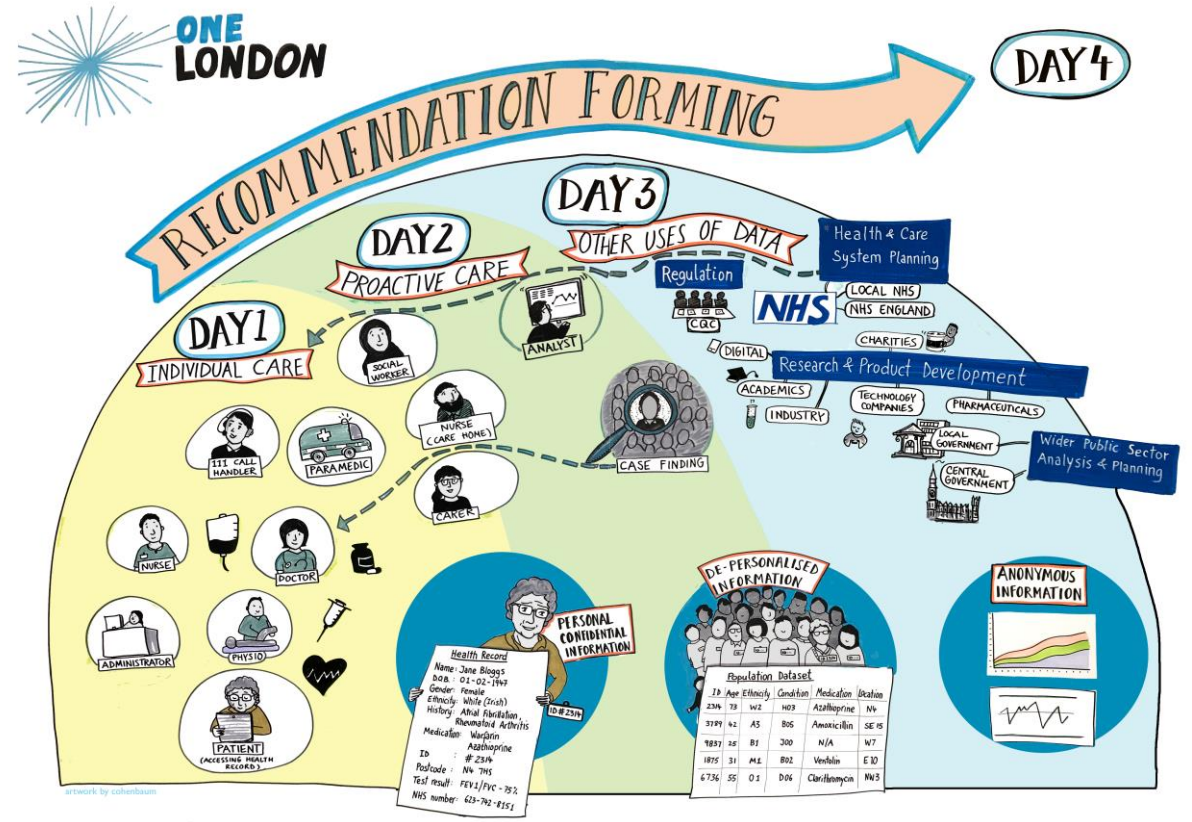
*“[Policy makers] determining the purpose and uses of data-driven technologies **should include the public as active partners in determining the acceptability of data-driven technologies**”*

- This isn't just a technical issue for managers, **it is an ethical issue** and different people have **different perspectives and opinions.**
- New technologies always open up **new opportunities** and **new risks**, and we must strike a balance that the public feels is acceptable.
- To make policy decisions we need to work with Londoners to **understand what matters, and why.**

Why are we doing this?

What would feel trustworthy?

- These are **complex issues** with no 'right' or 'wrong' answers.
- It is our responsibility to make policy, but we **need your opinions and reasoning** to help guide us to do a good job on your behalf.
- In the end, we want **people with different views to feel we have grappled with the tough choices in a balanced way**, and that we have come up with answers that feel **appropriate** and **trustworthy**.



Why are we doing this?

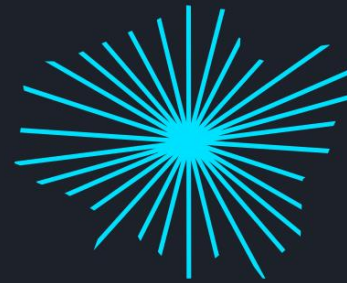
How to guide policy-makers?



What are Londoners already saying?



Why is this important?



ONE LONDON

Joining up Londoners' health and care

How can I get involved?



Do you have any questions?

2020 OneLondon

Privacy & Policy

